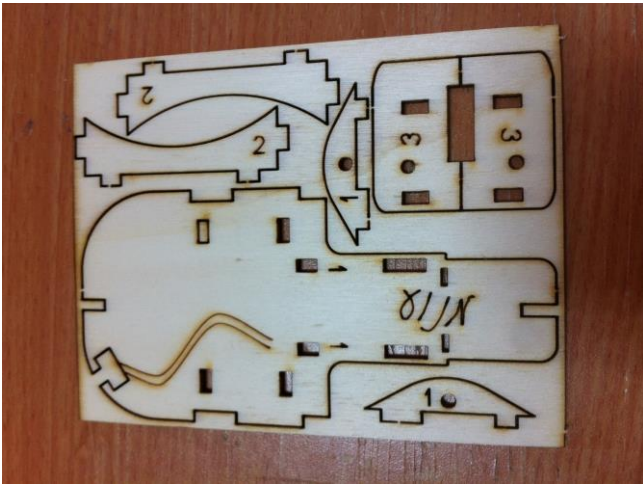


Triceratops 1



Before starting, make sure each student has a bag with his name on it.

All completed parts will be kept in the bag.

Cover all tables with table cloths.

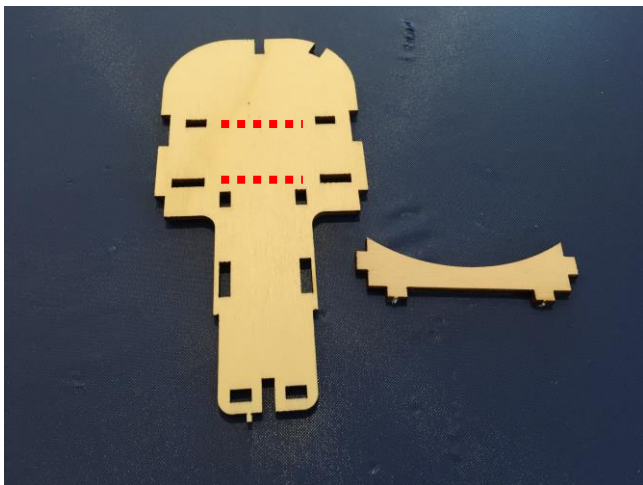
This lesson plan we are going to assemble the card. Pop out and file down the parts shown in the picture.

Give 5-7 minutes for filing down the parts and then continue.

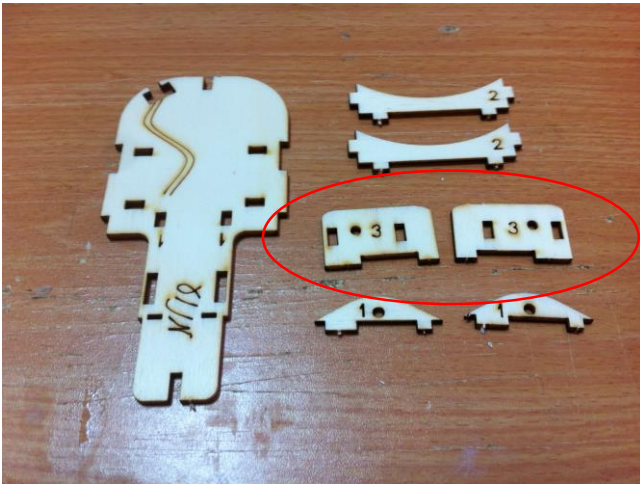


Place the large "guitar" part facing down

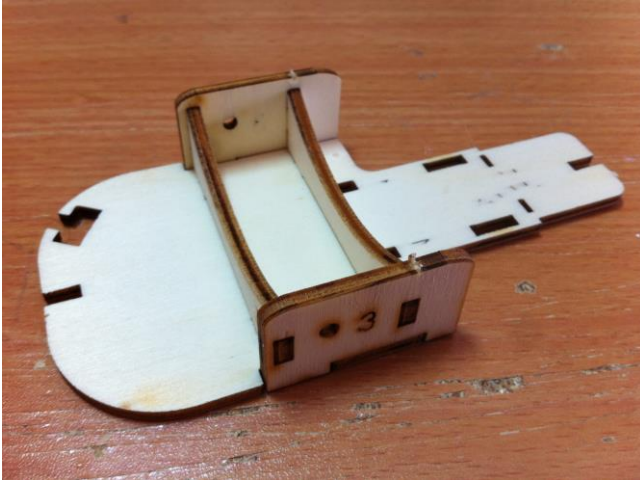
Give the students how to properly use the glue!



Apply 2 stripes of glut between the cracks (red lines), and place both long parts in their place. Make sure they are fully inserted.

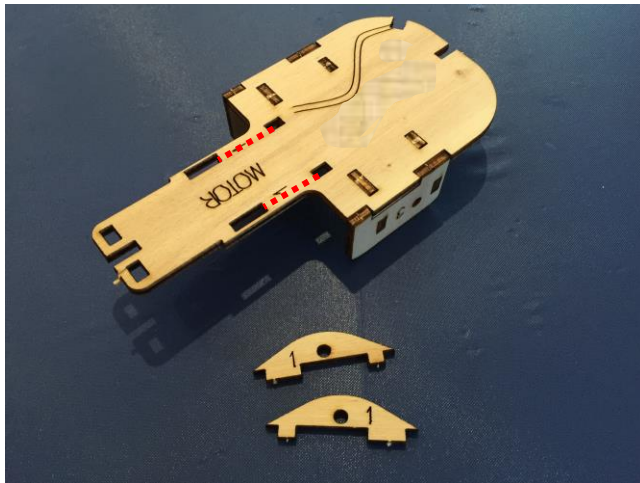


We are going to glue part #3. Please notice that on the bottom of the part we have a wide bump and a narrow bump. The bumps should fit into the card's side.



Glue both parts. If needed use the table to push in the parts.

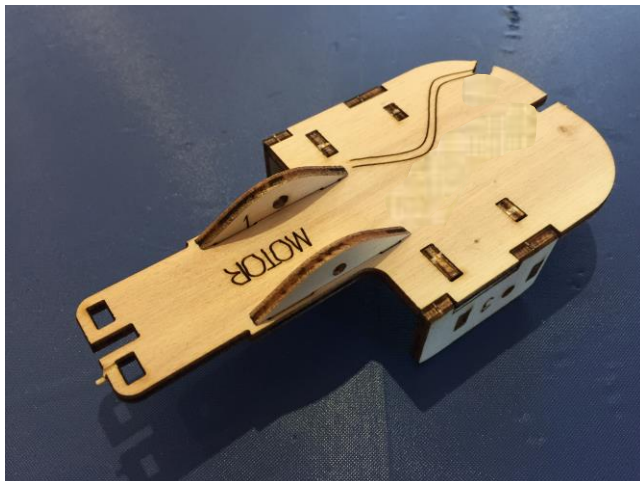
Double check directions!



Before continuing, check ALL the models.

Once checked flip the "guitar" over.

Place a strip of glue between the cracks (red lines).



Glue parts #1 to their proper place.



We are going to assemble the triangle



The triangle should be glued on the same side as parts #1.

Make sure the triangle is glued straight.



CHECK ALL THE MODELS!!!

Only then ask the students to put their parts in their bags.

If you have time left, start coloring the dinosaur (Instructor must write the name of the student on the wooden plate)

If you don't have much time left, collect all the materials and clean the class room.